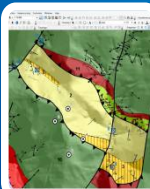
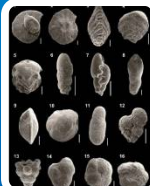
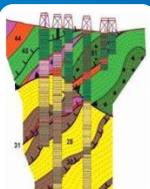


Join us on a field trip!



Geological mapping

in the Polish Outer Carpathians



Geological Map personally made? We will help you at every stage of its development.

Our course will teach you theoretical and practical geology of the region. You will examine lithostratigraphy, sedimentology and tectonics of the area. We will show you how to use a geological compass and GPS devices.

What Is Included

- Private local transportation and airport transfers
- Full-time English-speaking guide
- Materials: guidebook, maps, geological cross-sections
- Company of experienced geologists
- Necessary geological equipment
- Off-road vehicle transport
- Entrance fees for scheduled activities
- Certificate of completion of the course

Accommodation

Throughout the tour, you will enjoy modern, high-standard accommodation.

Our journey will begin in Krakow - a city regarded as one of the most beautiful, interesting and fashionable places in the world, attracting millions of tourists every year.



Do you want to develop practical skills, which are also useful outside of geology, such as team work and independent learning? Book your journey today!

Study and work planning

Plan your geological exploration

- Explore regional geology of the Flysch Carpathians
- Discuss stratigraphy and rock formations found in the field
- Plan trips based on anticipated location of outcrops and assign roles
- Select and prepare field equipment, learn how to use it
- Learn health and safety rules and field work procedures

Field and Laboratory work

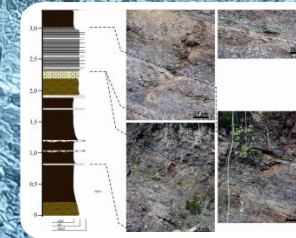
Work with experienced geologists and cartographers

- Log geologic features and field measurements
- Geological features include lithostratigraphy, tectonics, sedimentary structures, mineral composition and geomorphology
- Prepare sketches, draw structural sections for key outcrops and support your findings with photographs
- Collect and describe samples for further micropaleontologic analyses

Data processing

Use professional GIS software

- Import data from the GPS receiver, and describe the field trip, using dedicated software
- Use the ArcGIS software to compile data from various sources and provide geologic interpretation
- Create the final results of your field trip: geological map, geologic cross-sections, tectonic sketch, stratigraphic column, geological report and photographs of outcrops





Geokrak Sp. z o.o.

**ul. Mazowiecka 21
30-019 Kraków
Poland**

Phone: +48 12 633 8110

Fax: +48 12 632 0900

E-mail: office@geokrak.pl

www.geokrak.pl